



Light Trust No.6

PRICING TERM SHEET

Australian Prime RMBS (100% LMI) – New Issue

A\$500M

24 September 2015

Pricing Date
24 September 2015

Settlement Date
6 October 2015

Note Class	Issuance Amount	Expected Ratings (S&P/Fitch)	Advance Rate	Initial Credit Support	S&P / Fitch Required CE	1M BBSW + Coupon	Modelled WAL ¹ (Years)	Final Maturity Date
A1	460,000,000	AAA(sf)/AAAsf ²	92.00%	8.00%	4.70%/4.70%	+ 1.05%	2.9	Dec-46
A2	16,500,000	AAA(sf)/AAAsf ²	3.30%	4.70%	4.70%/4.70%	+ 1.15%	2.9	Dec-46
AB	9,000,000	AAA(sf)/AAAsf	1.80%	2.90%	2.37%/2.30%	+ 2.00%	6.0	Dec-46
B	10,750,000	AA-(sf)/NR	2.15%	0.75%	0.47%/--	+ 2.50%	6.0	Dec-46
C	3,050,000	A(sf)/NR	0.61%	0.14%	0.13%/--	+ 3.25%	6.0	Dec-46
D	700,000	NR/NR	0.14%	--	--	+ 5.50%	6.0	Dec-46
Total	500,000,000							

¹ The modelled WAL assume a portfolio constant prepayment rate ("CPR") of 23%, no defaults, no arrears, no principal draws, the Trigger Event are satisfied at the first possible date and the Call Option being exercised on the first possible Call Option Date.

² Fitch - the transaction structure supports an LMI independent rating for the class A1 and A2 notes; therefore, LMI is not required to support the ratings.

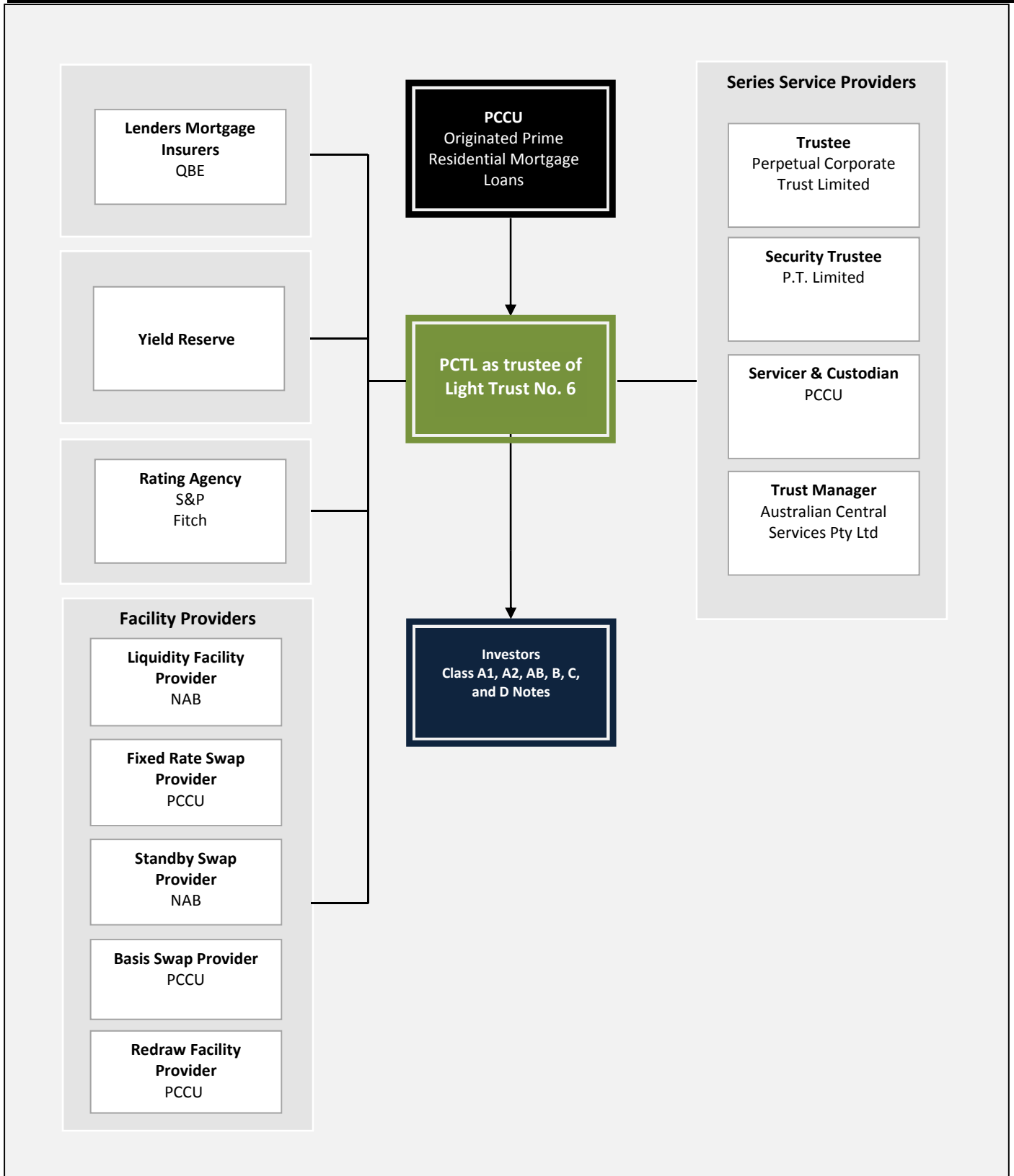
Disclaimer

The information contained in this document is preliminary and will be superseded by the final offering document relating to the notes described in this document and the underlying transaction documents referred to in it. Any decision to invest in the notes should be made after reviewing such final offering document and the underlying transaction documents referred to in it. Please also read the disclaimer at the end of this document.



Transaction Parties	
Issuer Trust	Light Trust No.6 (“LT No.6”)
Trustee	Perpetual Corporate Trust Limited (ABN 99 000 341 533)
Security Trustee	P.T. Limited (ABN 67 004 454 666)
Originator	Australian Central Credit Union Ltd, trading as People’s Choice Credit Union (“PCCU”).
Manager	Australian Central Services Pty Ltd (ABN 007 968 041)
Servicer	PCCU
Custodian	PCCU
Sellers	Australian Central Credit Union Ltd (ABN 11 087 651 125), trading as People's Choice Credit Union Perpetual Corporate Trust Limited (ABN 99 000 341 533) atf Light Trust Warehouse No.1) Perpetual Corporate Trust Limited (ABN 99 000 341 533) atf Light Trust Warehouse No.2) Perpetual Corporate Trust Limited (ABN 99 000 341 533) atf Titan No.12)
Arranger	National Australia Bank Limited (ABN 12 004 044 937) (“NAB”)
Joint Lead Managers	Australia and New Zealand Banking Group Limited (ABN 11 005 357 522) (“ANZ”) NAB Westpac Institutional Bank, a division of Westpac Banking Corporation (ABN 33 007 457 141) (“Westpac”)
Liquidity Facility Provider	NAB
Fixed Rate Swap Provider	PCCU
Standby Swap Provider	NAB
Basis Swap Provider	PCCU
Redraw Facility Provider	PCCU
Lenders Mortgage Insurers (LMI)	QBE Lenders’ Mortgage Insurance Limited (ABN 70 000 511 071) (“QBE”)
Rating Agencies	Fitch Australia Pty Ltd (“Fitch”) Standard and Poor’s (Australia) Pty Ltd (“S&P”)

Transaction Structure Diagram



Summary & Structural Features	
Notes	<p>Secured, limited recourse, pass through, floating rate debt instruments in registered form (the "Notes").</p> <p>The Notes are initially divided into six Note classes; the Class A1 Notes, Class A2, Class AB Notes, Class B, Class C and Class D.</p>
Underlying Assets	<p>Fully amortising Australian dollar floating rate and fixed rate loans to prime borrowers secured by mortgages over Australian residential properties.</p> <p>Each Mortgage Loan was originated, approved and documented in accordance with the relevant Guidelines and in the ordinary course of business by PCCU and settled by and in the name of PCCU (or, in the case of any Mortgage Loan acquired by the Trustee from the S&L Trustee, that Mortgage Loan was originated, approved and documented in accordance with the relevant Guidelines, and in the ordinary course of business of Savings and Loans Credit Union (S.A.) Limited (ABN 70 050 419 755), and was settled by and in the name of Savings and Loans Credit Union (S.A.) Limited);</p> <p>Note: there are no loans originated by Territory Insurance Office ("TIO") in this portfolio (TIO was acquired by People's Choice on 2 January 2015).</p>
Redraw Facility	<p>Borrowers are permitted to redraw a portion of principal up to the scheduled balance of their loan.</p> <p>To the extent there are sufficient levels of principal collections in any relevant collection period, Principal Draws may be used to fund Redraws.</p> <p>(a) If the Trust Manager determines that there is insufficient principal to cover the Redraws ("Redraw Shortfall"), the Trustee will make a drawing under the Redraw Facility to cover the shortfall up to the Redraw Limit.</p>
Redraw Limit	<p>means, at any time:</p> <p>(a) the greater of:</p> <p>(i.) the amount equal to 0.8% multiplied by the aggregate Invested Amount; and</p> <p>(ii.) the amount equal to 10.0% of the Redraw Limit on the Closing Date (after issue of the Notes on that date); or</p> <p>(b) any lesser amount as agreed in writing between the Redraw Facility Provider and the Manager,</p> <p>as reduced or cancelled under the Redraw Facility Agreement.</p>
Further Advances	No Further Advances permitted.
Credit Support	<p>Credit support will be sized to achieve the indicated ratings based on the Class of Note.</p> <p>Class A1 Notes: 'AAA(sf)' / 'AAAsf' by S&P and Fitch, respectively, assuming no credit is given to the lenders mortgage insurance covering each loan.</p> <p>Class A2 Notes: 'AAA(sf)' / 'AAAsf' by S&P and Fitch, respectively, assuming no credit is given to the lenders mortgage insurance covering each loan.</p> <p>Class AB Notes: 'AAA(sf)' / 'AAAsf' by S&P and Fitch, respectively, assuming credit is given to the lenders mortgage insurance covering each insured loan.</p> <p>Class B Notes: 'AA-(sf)' by S&P assuming credit is given to the lenders mortgage insurance covering each insured loan.</p> <p>Class C Notes: 'A(sf)' by S&P assuming credit is given to the lenders mortgage insurance covering each insured loan..</p>

Liquidity Support Features



Liquidity Support

If the Manager determines on any Determination Date that there is insufficient Available Income for the relevant Collection Period to meet Required Payments, the Manager must direct the Trustee to, in order of application:

(1) Yield Reserve	The balance standing to the Yield Reserve can be used to fund the Required Payment shortfall (" Yield Reserve Draw ").
(2) Principal Draw	If the amount (if any) by which the Required Payments exceed: (i) Available Income; and (ii) Yield Reserve Draw; then apply from the Total Available Principal, to the extent available, an amount equal to the Required Payment shortfall (" Principal Draw ").
(3) Liquidity Draw	If the amount (if any) by which the Required Payments exceed: (i) Available Income; (ii) Yield Reserve Draw; and (iii) Principal Draw; then apply from the Liquidity Facility, to the extent available, an amount equal to the Required Payment shortfall (a " Liquidity Draw ").

Next Payment Date

(4) Threshold Rate	<p>means, on any Determination Date, the minimum weighted average rate of interest that must be set on all Purchased Mortgage Loans where permitted under the relevant Mortgage Loan Agreement which will be sufficient, when aggregated with the income produced by the rate of interest on all other Purchased Mortgage Loans and Authorised Investments, to ensure that the Trustee will have available to it sufficient Collections to enable it to comply with its obligations under the Transaction Documents relating to the Trust for the <u>next Coupon Period</u> as they fall due including the repayment of any Principal Draws by the Final Maturity Date of all Notes.</p> <p>Setting Threshold Rate</p> <p>On each Payment Date after the Basis Swap Provider first fails to comply with its obligations under the Basis Swap, the Manager must direct the Servicer to, and the Servicer on being so directed shall, reset on that Payment Date the interest rate payable on some or all Mortgage Loans so that the weighted average of the interest rates payable on all Mortgage Loans (after taking into account any Fixed Rate Loans) is a rate not less than the Threshold Rate and the Servicer must promptly notify the relevant Obligors of the change in accordance with the Mortgage Loan Agreements.</p>
---------------------------	---

<p>Yield Reserve Limit</p>	<p>The Yield Reserve will have a nil balance on the Issue Date.</p> <p>Yield Reserve Limit means:</p> <ul style="list-style-type: none"> (a) on any Payment Date before the first possible Call Option Date, \$800,000; (b) on any Payment Date on or after the first possible Call Option Date, infinity; and (c) On the Final Maturity Date, zero. <p>From the Issue to the Payment Date that is prior to the first possible Call Option Date all available income at “Interest and other payments – distribution of Total Available Income” item (xviii) will be trapped until the Yield Reserve balance is a maximum cap of \$800,000.</p> <p>Yield Reserve from first possible Call Option Date</p> <p>From the Payment Date that is on or after the first possible Call Option Date all Excess Spread will be deposited into the Yield Reserve and there will be no maximum cap.</p>
<p>Liquidity Facility</p>	<p>The Liquidity Facility will be available to be drawn to fund Liquidity Draws up to an aggregate amount equal to the Liquidity Limit, which means, on any day, the lesser of:</p> <ul style="list-style-type: none"> (a) an amount equal to the greater of: <ul style="list-style-type: none"> (i.) 1.50% multiplied by the aggregate Invested Amount; and (ii.) 0.15% of the aggregate Initial Invested Amount of the Notes on the Closing Date; and (b) the amount agreed in writing between the Liquidity Facility Provider and the Manager provided that a Rating Notification has been obtained in relation to that amount.
<p>Extraordinary Expenses Reserve</p>	<p>On or by the first Note Issue Date, People's Choice must deposit, or procure the deposit of, not less than \$150,000 in the Extraordinary Expenses Reserve, with the Extraordinary Expenses Reserve minimum at any time meaning:</p> <ul style="list-style-type: none"> (a) \$150,000; minus (b) all amounts standing to the credit of the Extraordinary Expenses Reserve at that time (other than accrued interest on the Extraordinary Expenses Reserve). <p>The Extraordinary Expenses Reserve may be used to meet any Extraordinary Expenses incurred.</p>

Liquidation Losses & Principal Charge-Off Features

Liquidation Losses & Principal Charge-Off Mitigants

The Notes benefit from the following Liquidation Losses and Principal Charge-Off mitigants in the following order of application:

<p>(1) Lenders Mortgage Insurance</p>	<p>All Classes of Notes will benefit from in the first instance, credit support from the lenders mortgage insurance policies provided by the LMI for all loans.</p>
<p>(2) Excess Spread</p>	<p>Distribution of Total Available Income items (xvi) + (xvii) All classes of Notes will benefit from excess spread to be utilised to cover any Liquidation Losses and Principal Charge-Offs on the Notes over the term of the transaction.</p>
<p>(3) Note Subordination</p>	<ul style="list-style-type: none"> (i). The Class A1 Notes will benefit from subordination of the Class A2, Class AB, Class B Notes, Class C Notes and Class D Notes; (ii). The Class A2 Notes will benefit from the subordination of the Class AB Notes, Class B Notes, Class C Notes, and Class D Notes; (iii). The Class AB Notes will benefit from the subordination of the Class B Notes, Class C Notes and Class D Notes. (iv). The Class B Notes will benefit from the subordination of the Class C Notes and Class D Notes; and (v). The Class C Notes will benefit from the subordination of the Class D Notes;

Terms																													
Interest Payment Dates	Monthly																												
Benchmark	1-month BBSW																												
Interest Rate	Benchmark plus the relevant Margin																												
Day Count Basis	Actual/365																												
Issue Price	Par																												
Step-Up Margin	<p>means, in relation to any Coupon Period of a Class A1 Note, Class A2 Note or a Class AB Note commencing <u>on or after</u> the Call Option Date:</p> <p>(a) Class A1 Note, +0.25% per annum;</p> <p>(b) Class A2 Note, +0.25% per annum; and</p> <p>(c) Class AB Note, +0.25% per annum.</p> <p>There is no Step-Up Margin for Class B Notes, Class C Notes or D Notes.</p>																												
Invested Amount Interest Calculation	Interest on the Class A1 Notes, the Class A2 Notes, the Class B Notes, the Class C Notes and Class D Notes are calculated on the Invested Amount.																												
Minimum Denominations	Denominations of AUD\$10,000 (subject to a minimum parcel of AUD\$500,000)																												
Clearing Systems	Austraclear/Euroclear/Clearstream																												
ISIN / Common Code	<table border="1"> <thead> <tr> <th>Note</th> <th>Rating (S&P/Fitch)</th> <th>ISIN</th> <th>Common Code</th> </tr> </thead> <tbody> <tr> <td>Class A1 Notes</td> <td>'AAA(sf)'/AAAsf'</td> <td>AU3FN0028676</td> <td>129880015</td> </tr> <tr> <td>Class A2 Notes</td> <td>'AAA(sf)'/AAAsf'</td> <td>AU3FN0028684</td> <td>129880171</td> </tr> <tr> <td>Class AB Notes</td> <td>'AAA(sf)'/AAAsf'</td> <td>AU3FN0028692</td> <td>129880406</td> </tr> <tr> <td>Class B Notes</td> <td>'AA-(sf)'</td> <td>AU3FN0028700</td> <td>129880546</td> </tr> <tr> <td>Class C Notes</td> <td>'A(sf)'</td> <td>AU3FN0028718</td> <td>129880708</td> </tr> <tr> <td>Class D Notes</td> <td>--</td> <td>AU3FN0029070</td> <td>129895713</td> </tr> </tbody> </table>	Note	Rating (S&P/Fitch)	ISIN	Common Code	Class A1 Notes	'AAA(sf)'/AAAsf'	AU3FN0028676	129880015	Class A2 Notes	'AAA(sf)'/AAAsf'	AU3FN0028684	129880171	Class AB Notes	'AAA(sf)'/AAAsf'	AU3FN0028692	129880406	Class B Notes	'AA-(sf)'	AU3FN0028700	129880546	Class C Notes	'A(sf)'	AU3FN0028718	129880708	Class D Notes	--	AU3FN0029070	129895713
Note	Rating (S&P/Fitch)	ISIN	Common Code																										
Class A1 Notes	'AAA(sf)'/AAAsf'	AU3FN0028676	129880015																										
Class A2 Notes	'AAA(sf)'/AAAsf'	AU3FN0028684	129880171																										
Class AB Notes	'AAA(sf)'/AAAsf'	AU3FN0028692	129880406																										
Class B Notes	'AA-(sf)'	AU3FN0028700	129880546																										
Class C Notes	'A(sf)'	AU3FN0028718	129880708																										
Class D Notes	--	AU3FN0029070	129895713																										
Determination Date	The day which is two Business Days prior to each Payment Date.																												
Payment Date	means the 21 st day of each month, provided the first Payment Date occurs on 23 rd November 2015.																												
Call Option Date	means the first Payment Date on which the aggregate Invested Amount of the Notes is less than 10% of the aggregate Initial Invested Amount of the Notes																												
Final Maturity Date	the Payment Date in December 2046.																												
Collection Period	means a calendar month except that the first Collection Period will be the period commencing on (but excluding) the Closing Date and ending on (and including) the last day of that calendar month. The last Collection Period is the period from (but excluding) the last day of the previous Collection Period to (and including) the Termination Date of the Trust.																												
Business Day	means any days, (other than a Saturday, Sunday or public holiday in New South Wales, Victoria or South Australia), on which Banks are open for business in Sydney, Melbourne and Adelaide.																												
Business Day Convention	Next Business Day Convention.																												
Prefunding/Substitution Period	None, closed pool.																												

Selling Restrictions, Withholding Tax & Repo Eligibility	
Selling Restrictions General	<ul style="list-style-type: none"> • either: <ul style="list-style-type: none"> • the aggregate consideration payable by each offeree is at least A\$500,000 (or its equivalent in an alternate currency, in either case, disregarding moneys lent by the offeror or its associates); • the offer is to a professional investor for the purposes of section 708 of the Corporations Act; or • the offer or invitation otherwise does not require disclosure to investors in accordance with Part 6D.2 or Part 7.9 of the Corporations Act; • the offer or invitation does not constitute an offer to a “<u>retail client</u>” as defined for the purposes of section 761G of the Corporations Act; and • an interest in the Offered Notes may not be offered, sold, delivered or transferred within the United States of America, its territories or possessions or to, or for the account or benefit of, a “U.S. person” (as defined in Regulation S under the Securities Act (“Regulation S”)) at any time except in accordance with Regulation S or pursuant to an exemption from the registration requirements of the Securities Act;
Withholding Tax	The Notes will be issued to comply with the public offer test provision under 128F of the Income Tax Assessment Act 1936 (as amended).
Repo Eligibility	Application will be made to the Reserve Bank of Australia for the Class A1 Notes, Class A2 Notes and Class AB Notes to be repo-eligible securities after the Settlement Date.
CRD	In accordance with the Articles, People's Choice will retain, on an ongoing basis, a net economic interest of at least 5% in the nominal value of the securitisation on the Closing Date. As at the Closing Date such net economic interest will be comprised of an interest in randomly selected exposures equivalent to no less than 5% of the aggregate Principal Outstanding of the securitised exposures in accordance with paragraph (1)(c) of Article 405 of the Capital Requirements Regulation. People's Choice will confirm its ongoing retention of the net economic interest described above in the monthly investor reports and any change to the manner in which such interest is held will be notified to Noteholders.

Series Distributions

<p>Trigger Event</p>	<p>The Trigger Event will be satisfied at any time on the Determination Date preceding that Payment Date that falls on or after the second anniversary of the Closing Date if:</p> <ul style="list-style-type: none"> (a) the aggregate Invested Amount of the Class A2, Class AB, Class B, Class C and, Class D Notes is equal to or greater than 16% of the aggregate Invested Amount of All Notes; (b) No charge-off on the Class D Notes; (c) the average of the mortgage loans being 60 days or more in Arrears over the 3 months immediately preceding that Payment Date is less than 4%; (d) on that Payment Date the aggregate Invested Amounts of all Notes at that time is greater than or equal to 10% of the aggregate Initial Invested Amounts of all Notes;
<p>Principal Payments (pre-enforcement)</p>	<p>On each Payment Date where the <u>Trigger Event</u> are <u>not satisfied</u> the principal distribution to the Notes will be paid in the following order:</p> <ul style="list-style-type: none"> (i.) to fund any Principal Draws; (ii.) to repay any current period Redraws; (iii.) to repay any prior period Redraw Advances outstanding under the Redraw Facility Agreement; (iv.) to RFS Noteholders until the RFS Noteholder Stated Amounts have been reduced to zero; (v.) pari passu and rateably: <ul style="list-style-type: none"> (a) to Class A1 Noteholders until the Class A1 Stated Amounts have been reduced to zero; (b) to Class A2 Noteholders until the Class A2 Stated Amounts have been reduced to zero; (vi.) to Class AB Noteholders until the Class AB Stated Amounts have been reduced to zero; (vii.) to Class B Noteholders until the Class B Stated Amounts have been reduced to zero; (viii.) to Class C Noteholders until the Class C Stated Amounts have been reduced to zero; and (ix.) to Class D Noteholders until the Class D Stated Amounts have been reduced to zero; <p>On each Payment Date where the <u>Trigger Event</u> are <u>satisfied</u> the principal distribution to the Notes will be paid in the following order:</p> <ul style="list-style-type: none"> (i.) to fund any Principal Draws; (ii.) to repay any current period Redraws; (iii.) to repay any prior period Redraw Advances outstanding; (iv.) to RFS Noteholders until the RFS Noteholder Stated Amounts have been reduced to zero; (v.) pari passu and rateably: <ul style="list-style-type: none"> (i.) to Class A1 Noteholders until the Class A1 Stated Amounts have been reduced to zero; (ii.) to Class A2 Noteholders until the Class A2 Stated Amounts have been reduced to zero; (iii.) to Class AB Noteholders until the Class AB Stated Amounts have been reduced to zero; (iv.) to Class B Noteholders until the Class B Stated Amounts have been reduced to zero; (v.) to Class C Noteholders until the Class C Stated Amounts have been reduced to zero; and (vi.) to Class D Noteholders until the Class D Stated Amounts have been reduced to zero;

Required Payments

means, for any Collection Period:

- (i.) if, as at the Determination Date immediately following the end of that Collection Period, the Class B Stated Amount is less than 95% of the Invested Amount of the Class B Notes, all amounts to be paid by the Trustee under Interest and other payments – distribution of Total Available Income (i) to (xi) (inclusive) on the Payment Date following that Collection Period; or
- (ii.) if, as at the Determination Date immediately following the end of that Collection Period, the Class C Stated Amount is less than 95% of the Invested Amount of the Class C Notes, all amounts to be paid by the Trustee under Interest and other payments – distribution of Total Available Income (i) to (xii) (inclusive) on the Payment Date following that Collection Period; or
- (iii.) if, as at the Determination Date immediately following the end of that Collection Period, the Class D Stated Amount is less than 95% of the Invested Amount of the Class D Notes, all amounts to be paid by the Trustee under Interest and other payments – distribution of Total Available Income (i) to (xiii) (inclusive) on the Payment Date following that Collection Period; or
- (iv.) otherwise, all amounts to be paid by the Trustee under Interest and other payments – distribution of Total Available Income (i) to (xiv) (inclusive) on the Payment Date following that Collection Period.

Interest and other payments – distribution of Total Available Income

(pre-enforcement)

Income received by the Trust in each collection period will be distributed in

- (i.) \$1 to the Residual Income Unitholder (“RIU”);
- (ii.) to the Approved Seller for the Accrued Interest Adjustment;
- (iii.) Taxes;
- (iv.) Trust Expenses including all fees (other than the Custodian and Servicing Fee) payable in relation to the Trust for that Collection Period;
- (v.) the Custodian and Servicing Fee
- (vi.) pari passu and rateably to the relevant Swap Providers and any Net Swap Settlement payable by the Trustee for the Collection Period or any Net Swap Settlement due but unpaid by the Trustee with respect to previous Collection Periods , except (in each case) to the extent that the Swap Provider is the Defaulting Party and any amounts due and payable by the Trustee to the Standby Swap Provider in accordance with the Interest Rate Swap;
- (vii.) to the relevant Interest Rate Swap Provider any break costs in respect of an Interest Rate Swap in respect of Purchased Mortgage Loans which have been prepaid or which have been Charged Off and which has not previously been paid, but only to the extent of Break Payments that have been received by the Trustee and except to the extent that the Interest Rate Swap Provider is the Defaulting Party;
- (viii.) repayment of any Liquidity Draw and payment of interest and any fees on any Liquidity Draw which are due and remain unpaid;
- (ix.) pari passu and rateably
 - (a) to Class A1 Noteholders current and prior period interest;
 - (b) to RFS Noteholders current and prior period interest; and
 - (c) to the Redraw Facility Provider all fees and current and prior period interest;
- (x.) to Class A2 Noteholders current and prior period interest;
- (xi.) to Class AB Noteholders current and prior period interest;
- (xii.) to Class B Noteholders current and prior period interest;
- (xiii.) to Class C Noteholders current and prior period interest;
- (xiv.) to Class D Noteholders current and prior period interest;
- (xv.) to the repayment of any Principal Draws outstanding;
- (xvi.) to the repayment of Charge Offs;
- (xvii.) to the repayment of Carryover Charge-Offs;
- (xviii.) to the Yield Reserve subject to Yield Reserve Limit;
- (xix.) to the Extraordinary Expenses Reserve up to the Extraordinary Expenses Reserve Shortfall;
- (xx.) pari passu and rateably, any liabilities owing under any indemnity granted to the Dealers, the Security Trustee or the Servicer;
- (xxi.) pari passu and rateably:
 - (a) payment to the Redraw Facility Provider and the Liquidity Facility Provider any amounts not otherwise payable under sub-paragraph (viii) and (ix)(c) above (as applicable) on that Payment Date and any such amounts remaining unpaid from prior Payment Dates; and
 - (b) To the relevant Interest Rate Swap Provider any break costs in respect of an Interest Rate Swap in respect of Purchased Mortgage Loans to the extent not covered by sub-paragraph (vii); and
- (xxii.) to the relevant Swap Provider of any Net Swap Settlement for the Collection Period to the extent not covered by sub-paragraph (vi);
- (xxiii.) to the RIU.

Allocation of Carryover Charge-Offs	<p>If the Manager determines on any Determination Date that there are Carryover Charge Offs, the Manager must, on and with effect from the Payment Date immediately following that Determination Date, allocate those Carryover Charge Offs in the following order:</p> <ul style="list-style-type: none"> (a) to reduce the Class D Notes until the Class D Stated Amount is reduced to zero; (b) to reduce the Class C Notes until the Class C Stated Amount is reduced to zero; (c) to reduce the Class B Notes until the Class B Stated Amount is reduced to zero; (d) to reduce the Class AB Notes until the Class AB Stated Amount is reduced to zero; (e) to reduce the Class A2 Notes until the Class A2 Stated Amount is reduced to zero; and (f) next, pari passu and rateably: <ul style="list-style-type: none"> (i.) to reduce the Class A1 Notes until the Class A1 Stated Amounts is reduced to zero; and (ii.) to the RFS Notes until the RFS Stated Amounts are reduced to zero.
Reinstatement of Carryover Charge-Offs	<p>To the extent that on any Payment Date amounts are available for allocation under the Interest and other payments – distribution of Total Available Income (xvi) and (xvii), then an amount equal to these amounts shall be applied on that Payment Date in the following order of priority:</p> <ul style="list-style-type: none"> (a) first, pari passu and rateably: <ul style="list-style-type: none"> (i.) to reinstate the Class A1 Notes Stated Amount; and (ii.) to reinstate the RFS Stated Amounts; (b) to reinstate the Class A2 Notes Stated Amount; (c) to reinstate the Class AB Notes Stated Amount; (d) to reinstate the Class B Notes Stated Amount; (e) to reinstate the Class C Notes Stated Amount; and (f) to reinstate the Class D Notes Stated Amount;

Payment priorities following an Event of Default

(post enforcement)

If the charge is enforced, the proceeds are to be applied in the following order of priority, subject to any other priority which may be required by statute or law:

- (a) to the extent required by law, to pay the holder of any prior ranking Security Interest over Trust Assets;
- (b) to pay (pari passu and rateably):
 - (i.) all costs, charges, expenses and disbursements properly incurred in the exercise of any Power by the Security Trustee, a Receiver or an Attorney or other amounts payable to the Security Trustee under this deed;
 - (ii.) any fees due to the Security Trustee;
 - (iii.) any fees, and unpaid Expenses, due to the Grantor; and
 - (iv.) the Receiver's remuneration;
- (c) to pay any unpaid Accrued Interest Adjustment due;
- (d) all Secured Moneys owing to the Support Facility Providers (including any break costs in respect of an Interest Rate Swap in respect of Purchased Mortgage Loans which have been prepaid or which have been Charged Off and which has not previously been paid, but only to the extent of Break Payments that have been received by the Trustee) (except in respect of any Enhancement and except in respect of any amounts owing to a Swap Provider where that Swap Provider is the Defaulting Party under the relevant Hedge Agreement);
- (e) to pay (pari passu and rateably):
 - (i.) all Secured Moneys owed to RFS Noteholders; and
 - (ii.) all Secured Moneys owed to the Class A1 Noteholders;
- (f) to pay all Secured Moneys owed to the Class A2 Noteholders;
- (g) to pay all Secured Moneys owed to the Class AB Noteholders;
- (h) to pay all Secured Moneys owed to the Class B Noteholders;
- (i) to pay all Secured Moneys owed to the Class C Noteholders;
- (j) to pay all Secured Moneys owed to the Class D Noteholders;
- (k) to the Extraordinary Expenses Reserve Lender towards repayment of outstanding Extraordinary Expenses Reserve Loans;
- (l) to pay (pari passu and rateably):
 - (i) any amounts not covered above or below owing to any Chargee under any Transaction Document including any amounts owing to a Swap Provider where that Swap Provider is the Defaulting Party under the relevant Hedge Agreement;
 - (ii) to the relevant Interest Rate Swap Provider any break costs in respect of an Interest Rate Swap in respect of Purchased Mortgage Loans to the extent not covered by (d) above.
- (m) to pay the holder of any subsequent Security Interest over Trust Assets of which the Security Trustee has notice the amount properly secured by the Security Interest; and
- (n) to pay any surplus in accordance with the Master Trust Deed.

Summary Pool Statistics as at 6th August 2015

Collateral

Fully amortising Australian dollar floating rate and fixed rate loans to prime borrowers secured by mortgages over Australian residential properties originated by PCCU.

Pool Summary

No. of Loans (Consolidated):	2,900
Aggregate Pool Current Balance:	\$499,999,646
Maximum Loan Balance (Consolidated):	\$854,316
Average Loan Balance (Consolidated):	\$172,414
Maximum Current LVR (Consolidated):	91.2%
WAVG Current LVR:	60.7%
>80% Current LVR:	7.5%
WAVG Seasoning (months):	40.8
Full Documentation loans	100.0%

Current LVR Distribution

0 to 50%	24.5%
> 50% ≤ 60%	16.3%
> 60% ≤ 70%	23.0%
> 70% ≤ 80%	28.7%
> 80% ≤ 85%	4.5%
> 85% ≤ 90%	2.4%
> 90% ≤ 95%	0.6%

Current Loan Size Distribution

0 to \$100K	10.2%
> \$100K ≤ \$200K	30.1%
> \$200K ≤ \$300K	33.6%
> \$300K ≤ \$400K	16.2%
> \$400K ≤ \$500K	6.3%
> \$500K ≤ \$750k	3.0%
> \$750k	0.5%

Geographic Distribution

NSW	1.8%
QLD	1.2%
VIC	6.3%
SA	79.9%
WA	1.5%
ACT	0.4%
NT	8.8%
TAS	0.1%
Inner City	0.8%
Metropolitan	73.1%
Non-metropolitan	26.1%

Repayment Type

Principal & Interest	94.2%
Interest Only	5.8%

Rate Type





Variable Rate	71.7%
Fixed Rate	28.3%

Occupancy

Owner Occupied	86.7%
Investment	13.3%

Mortgage Insurance

QBE LMI Insured	100%
Uninsured	--

Transaction Contacts			
	Heather Gale Treasurer +61 8 8305 1829 HGale@peopleschoicecu.com.au	Paul Farmer Manager Treasury +61 8 8305 1898 PFarmer@peopleschoicecu.com.au	Kimberly Ward Treasury Analyst +61 8 8305 1636 KWard@peopleschoicecu.com.au
	Craig Stevens Director Capital Financing - Securitisation +61 3 9208 8023 Craig.T.Stevens@nab.com.au	Tim Burgess Associate Director Capital Financing - Syndicate +61 2 9237 1122 Tim.Burgess@nab.com.au	Adam Sutherland Senior Associate Capital Financing - Securitisation +61 3 8697 9211 Adam.B.Sutherland@nab.com.au
	Scott Gifford Director Securitisation +61 2 8037 0634 scott.gifford@anz.com	Adam Gaydon Director Syndicate +61 2 8037 0201 adam.gaydon@anz.com	Rai Mehta Manager SCM +61 2 8037 0877 rai.mehta@anz.com
	Phil McEwen Director Structured Finance +61 2 8037 0634 pmcewen@westpac.com.au	Haan Ti Director Structured Finance +61 2 8254 8065 hti@westpac.com.au	Andrew Crawshaw-Fardouly Senior Associate Corporate & Structured Finance acrawshawfardouly@westpac.com.au

Disclaimer

This document has been prepared on a confidential basis for distribution only to professional investors who are not "retail clients" within the meaning of section 761G of the Corporations Act 2001 ("Retail Clients") and whose ordinary business includes the buying or selling of securities such as the securities described in this document ("Notes"). This document should not be distributed to, and is not intended for, any other person. The information contained in this document shall be treated as strictly confidential by the recipient and the National Australia Bank Limited (ABN 12 004 044 937, AFSL 230686) ("NAB") and Australia and New Zealand Banking Group Limited (ABN 11 005 357 522) and Westpac Banking Corporation (ABN 33 007 457 141) (together with NAB, collectively, the "Joint Lead Managers") specifically prohibit the redistribution of this document and accept no liability whatsoever for the actions of third parties in this respect.

The Notes do not represent deposits or other liabilities of the Joint Lead Managers, Australian Central Credit Union Limited or any of their related bodies corporate or affiliates. The holding of Notes is subject to investment risk, including possible delays in repayment and loss of income and principal invested. None of the Joint Lead Managers, Australian Central Credit Union Limited or any of their related bodies corporate or affiliates:

- (a) stands behind the capital value or performance of the Notes or the assets of the trust; or
- (b) guarantees the payment of interest or the repayment of principal due on the Notes; or
- (c) guarantees in any way the performance of any obligations of any other party.

To the fullest extent permissible by law, none of the Joint Lead Managers nor their related bodies corporate, affiliates or any of their officers, employees, agents, advisers or contractors (together their "Related Entities") warrants or represents that this document or the information, opinions or conclusions set out or referred to in this document and any other information presented or discussed with you in connection with this document ("Information") is accurate, reliable, complete or current. The Joint Lead Managers and their Related Entities, to the fullest extent permitted by law, disclaim any and all responsibility for and will not be liable in any way whatsoever (whether in negligence or otherwise) for any loss, damage, costs or expenses of any nature which may be suffered by any person relying upon this document or the Information (including errors, defects, misrepresentations or omissions) or otherwise arising in connection with this document or such Information.

In Australia, this document, any Information and any offering material or advertisement relating to the Notes may only be distributed or published in a manner that does not require disclosure to investors in accordance with Parts 6D.2 or 7.9 of the Corporations Act 2001 (Cth), Australia (the "Corporations Act").

This document and the Information has been prepared solely for informational purposes and is not intended, in any jurisdiction, to be a recommendation, invitation, offer or solicitation or inducement to buy or sell any financial instrument or product, or to engage in or refrain from engaging in any transaction, and is not intended to be a complete summary or statement of the Notes or the relevant transaction. If at any time there should commence an offering of the Notes, any decision to invest in any such offer and to subscribe for or acquire such Notes must be based wholly on the information contained in a final offering document issued or to be issued in

connection with any such offer and the underlying transaction documents referred to in it and not on the contents of this document or any Information. The information contained in this document is preliminary as of the date of this document, supersedes any previous such information delivered to you and will be superseded by any such information subsequently delivered and ultimately by the final offering document and the underlying transaction documents relating to the Notes. The information in this document is subject to change, completion, supplement or amendment from time to time. Any decision to invest in the Notes should be made after reviewing such final offering document and the underlying transaction documents, conducting such investigations as prospective investors deem necessary and consulting their own legal, accounting, business, financial and tax advisors in order to make an independent determination of the suitability and consequences of an investment in the Notes.

This document and the Information have been based on information or statements that have been or will be provided by a number of sources, including Australian Central Credit Union Limited and Related Entities, for discussion purposes only, and does not purport to be all-inclusive or to contain all of the information that a prospective purchaser may require or desire. Neither this document nor any Information has been, and will not be, independently verified or audited. In all cases, interested parties should conduct their own investigation and analysis of the information in this document and any other Information. None of such sources, including any of the transaction parties, nor any of their Related Entities makes any representation or warranty (express or implied) or otherwise as to the accuracy or completeness of any of this document and any Information, and none of the foregoing shall have any liability for any representations (express or implied) contained in, or for any omissions from, this document or any Information. This document or the Information may contain data that may no longer be complete or current.

This document may contain statements that are not purely historical in nature, but are “forward-looking statements”. These forward-looking statements are or will be based upon certain assumptions. Actual events are difficult to predict and are beyond the control of the issuer and any of the other transaction parties. Actual events may differ materially from those assumed. All forward-looking statements included are or will be based on information available on the date of this document or the date of presentation or discussion of any Information and none of the Joint Lead Managers, the other transaction parties or their Related Entities assume any duty to update any forward-looking statements. Some important factors which would cause actual results to differ materially from those in any forward-looking statements include the actual composition of the portfolio underlying the transaction, any defaults with respect to such portfolio, the timing of defaults and subsequent recoveries, changes in interest rates, any weakening of the specific credits included in such portfolio, and general economic, market, legal and financial conditions, among others. Other risk factors will also be described in the preliminary and final offering documents. Accordingly, there can be no assurance that any estimated returns or projections can be realised, that any forward-looking statements will materialise or that actual returns or results will not be materially lower than those that may be presented or discussed. Each prospective investor should not place undue reliance on forward-looking statements and are advised to make their own independent analysis and determination and seek their own independent advice.

This document and the Information may include various forms of performance analysis, note characteristics and note pricing estimates for the securities addressed. This document and such Information is illustrative and is not intended to predict actual results which may differ substantially from those reflected in this document or the Information. Performance analysis may be based on certain assumptions with respect to significant factors that may prove not to be as assumed. Prospective investors should understand the assumptions and evaluate whether they are appropriate for their purposes. Performance results are or may be based on mathematical models that use inputs to calculate results. None of the Joint Lead Managers, the other transaction parties nor their Related Entities makes any representation or warranty as to the reasonableness of the assumptions or as to any other financial information contained in the models used. Each recipient must make its own evaluation of the financial models, including the assumptions on which they are based. None of the Joint Lead Managers, the other transaction parties nor their Related Entities assumes any responsibility for the accuracy or validity of any of the information produced from such financial models. As with all models, results may vary significantly depending upon the value of the inputs given. This document and the Information addresses or may address only certain aspects of the characteristics of the Notes and thus does not and will not provide a complete assessment. As such, this document or any Information may not reflect the impact of all structural characteristics of the Notes, including call events and cash flow priorities at all prepayment speeds and/or interest rates. Prospective investors should consider whether the behaviour of the Notes should be tested under assumptions different from those that may be included in this document or the Information.

Any pricing estimates that a Joint Lead Manager or any other transaction party has supplied or may supply at your request (a) represent the view, at the time determined, of the investment value of the Notes between the estimated bid and offer levels, the spread between which may be significant due to market volatility or illiquidity, (b) do not and will not constitute a bid by any person for any Notes, (c) may not constitute prices at which the Notes may be purchased or sold in any market, (d) have not been and will not be confirmed by actual trades, may vary from the value such party assigns any such Note while in its inventory, and may not take into account the size of a position you may have in the Notes and (e) may have been derived from matrix pricing that may use data relating to other notes whose prices may be more readily ascertainable to produce a hypothetical price based on the estimated yield spread relationship between the Notes.

A Joint Lead Manager and/or its affiliated companies may make markets in the Notes or have positions in these securities from time to time including while this document or the Information is circulating or during such period may engage in transactions with any of the other transaction parties or any of their Related Entities. A Joint Lead Manager and/or its affiliated companies and/or its employees and clients from time to time may hold shares, options, rights and/or warrants on any issue referred to in this document and may, as principal or agent, buy or sell such securities. A Joint Lead Manager may have acted as manager or co-manager of a public offering of any such securities in the past, and its affiliates may provide or have provided banking services or corporate finance to the companies referred to



in this document. These interests and dealings may adversely affect the price or value of the Notes. The knowledge of affiliates concerning such services may not be reflected in this document.

Each of the Joint Lead Managers, acting in any capacity, discloses that, in addition to the arrangements and interests it will have with respect to the issuer, the assets of the trust and the Notes (the “**Transaction Document Interests**”), it, its Related Entities (as defined in the Corporations Act) and employees, directors and officers:

- (a) may from time to time be a holder of the Notes (“**Noteholder**”) or have a pecuniary or other interests with respect to the Notes and they may also have interests relating to other arrangements with respect to a Noteholder or a Note; and
- (b) will or may receive fees, brokerage and commissions or other benefits, and act as principal with respect to any dealing with respect to any Notes,

(the “**Note Interests**”).

By accepting this document, you acknowledge these disclosures and further acknowledge and agree that:

- (i). each of the Joint Lead Managers and each of their Related Entities and employees, directors and officers (each a “**Relevant Entity**”) will or may have the Transaction Document Interests and may from time to time have the Note Interests and is, and from time to time may be, involved in a broad range of transactions (the “**Other Transactions**”) in various capacities, both on the Relevant Entity’s own account and/or for the account of other persons (the “**Other Transaction Interests**”);
- (ii). each Relevant Entity in the course of its business (whether with respect to the Transaction Document Interests, the Note Interest, the Other Transaction Interests or otherwise) may act independently of any other Relevant Entity;
- (iii). to the maximum extent permitted by applicable law, no Relevant Entity has any duties or liabilities (including, without limitation, any advisory or fiduciary duty) to any person other than any contractual obligations of the Joint Lead Managers as set out in the transaction documents;
- (iv). a Relevant Entity may have or come into possession of information not contained in this document or the final offering document relating to the Notes that may be relevant to any decision by a prospective investor to acquire the Notes and which may or may not be publicly available to prospective investors (“**Relevant Information**”);
- (v). to the maximum extent permitted by applicable law, no Relevant Entity is under any obligation to disclose any Relevant Information to any party named in this document or any of its affiliates (a “**Transaction Document Party**”) or to any prospective investor and this document, the final offering document relating to the Notes and any subsequent conduct by a Relevant Entity should not be construed as implying that the Relevant Entity is not in possession of such Relevant Information; and
- (vi). each Relevant Entity may have various potential and actual conflicts of interest arising in the course of its business. These interests may conflict with the interests of a Transaction Document Party, a prospective investor or a Noteholder, and a Transaction Document Party, a prospective investor or a Noteholder may suffer loss as a result. To the maximum extent permitted by applicable law, a Relevant Entity is not restricted from entering into, performing or enforcing its rights in respect of the Transaction Document Interests, the Note Interests or the Other Transaction Interests and may otherwise continue or take steps to further or protect any of those interests and its business even where to do so may be in conflict with the interests of Noteholders, prospective investors or a Transaction Document Party, and the Relevant Entities may in so doing act without notice to, and without regard to, the interests of any such person.

This is not a comprehensive or definitive list of all actual or potential conflicts of interest. Further information will be contained in the preliminary and final offering documents relating to the Notes and you should consider that.

The distribution of this document, the Information or any offering document in relation to the Notes and the offering or sale of the Notes in certain jurisdictions may be restricted by law. None of the Joint Lead Managers nor any of their Related Entities represent that this document, the Information or any offering material, may be lawfully distributed, or that the Notes may be lawfully offered, in compliance with any applicable registration or other requirements in any such jurisdiction, or pursuant to any exemption available there under, or assume any responsibility for facilitating any such distribution or offering. In particular, no action has been, or will be, taken by the Joint Lead Managers, the issuer or any other person that would permit a public offering of the Notes or the distribution of this document, the Information or any offering document or publicity material relating to the Notes in any country or jurisdiction where action for that purpose is required. Accordingly, the Notes may not be offered or sold, directly or indirectly, and neither this document, the Information nor any offering document, advertisement or other offering material may be issued or distributed or published in any country or jurisdiction, except in circumstances that will result in compliance with all applicable laws and regulations.

In the United Kingdom NAB is subject to regulation by the Financial Conduct Authority and limited regulation by the Prudential Regulation Authority. In the United Kingdom, investments and investment services referred to in this document are directed solely at qualified, sophisticated or professional investors to whom such investments and investment services may be lawfully directed. Information distributed in Hong Kong by NAB is distributed by NAB, Hong Kong branch. In Singapore, information distributed by NAB is distributed by NAB, Singapore branch which is licensed under the Banking Act, Chapter 19 of Singapore and is subject to the supervision of the Monetary Authority of Singapore.

Westpac Banking Corporation (“Westpac”) is registered in England as a branch (branch number BR000106 and is authorized and regulated by the Financial Conduct Authority and the Prudential Regulation Authority. Westpac Europe Limited is a company registered in



England (number 05660023) and is authorised and regulated by the Financial Conduct Authority. Westpac Singapore Branch holds a wholesale banking licence and is subject to supervision by the Monetary Authority of Singapore. Westpac Hong Kong Branch holds a banking licence and is subject to supervision by the Hong Kong Monetary Authority. Westpac Hong Kong branch also holds a license issued by the Hong Kong Securities and Futures Commission (SFC) for Type 1 and Type 4 regulated activity.

Australia. This document is distributed in Australia by Australia and New Zealand Banking Group Limited (“ANZ”). ANZ holds an Australian Financial Services licence no. 234527. This document is for distribution only for ‘wholesale investors’, as defined in section 761G of the Corporations Act 2001 Cth, in circumstances where disclosure is not required under Chapters 6D or 7 of the Corporations Act and in such other circumstances as may be permitted by applicable law. This document should not be distributed to, and is not intended for, any other person.

European Economic Area (“EEA”): United Kingdom. ANZ is authorised in the United Kingdom by the Prudential Regulation Authority (“PRA”) and is subject to regulation by the Financial Conduct Authority (“FCA”) and limited regulation by the PRA. Details of ANZ’s regulation by the PRA will be available on request. This document is distributed in the United Kingdom by ANZ solely for the information of persons who would come within the FCA definition of “eligible counterparty” or “professional client”. It is not intended for and must not be distributed to any person who would come within the FCA definition of “retail client”. Nothing here excludes or restricts any duty or liability to a customer which ANZ may have under the UK Financial Services and Markets Act 2000 or under the regulatory system as defined in the Rules of the PRA and the FCA. Germany. This document is distributed in Germany by the Frankfurt Branch of ANZ solely for the information of its clients. Other EEA countries. This document is distributed in the EEA by ANZ Bank (Europe) Limited (“ANZBEL”) which is authorised by the PRA and regulated by the FCA and the PRA in the United Kingdom, to persons who would come within the FCA definition of “eligible counterparty” or “professional client” in other countries in the EEA. This document is distributed in those countries solely for the information of such persons upon their request. It is not intended for, and must not be distributed to, any person in those countries who would come within the FCA definition of “retail client”.

Hong Kong. This document is distributed in Hong Kong by the Hong Kong branch of ANZ, which is registered by the Hong Kong Monetary Authority to conduct Type 1 (dealing in securities), Type 4 (advising on securities) and Type 6 (advising on corporate finance) regulated activities. In Hong Kong this document is only for “professional investors” as defined in the Securities and Futures Ordinance (Cap. 571 of the Laws of Hong Kong) and any rules made under that Ordinance. The contents of this document have not been reviewed by any regulatory authority in Hong Kong.

New Zealand. This document is distributed in New Zealand by ANZ Bank New Zealand Limited. This document is intended to be of a general nature, does not take into account your financial situation or goals, and is not a personalised adviser service under the Financial Advisers Act 2008.

Singapore. This document is distributed in Singapore by the Singapore branch of ANZ solely for the information of “accredited investors”, “expert investors” or “institutional investors” (each term as defined in the Securities and Futures Act Cap. 289 of Singapore). ANZ is licensed in Singapore under the Banking Act Cap. 19 of Singapore and is exempted from holding a financial adviser’s licence under Section 23(1)(a) of the Financial Advisers Act Cap. 100 of Singapore.

The Notes are subject to modification or revision and are offered on a “when, as and if issued” basis. Prospective investors should understand that, when considering the purchase of the Notes, a contract of sale will come into being no sooner than the date on which the Notes has been priced and the Joint Lead Managers have confirmed the allocation of Notes to be made to investors. Any “indications of interest” expressed by any prospective investor and any “soft circles” generated by the Joint Lead Managers, will not create binding contractual obligations. As a result of the foregoing, a prospective investor may commit to purchase Notes that have characteristics that may change, and each prospective investor is advised that all or a portion of the Notes may be issued without all or certain of the characteristics described in this document or the Information. If the Joint Lead Managers determine that a condition to issuance of the Notes is not satisfied in any material respect the Joint Lead Managers will have no obligation to such prospective investor to deliver any portion of the Notes which such prospective investor has committed to purchase.

Credit ratings are for distribution only to a person (a) who is not a Retail Client and is also a sophisticated investor, professional investor or other investor in respect of whom disclosure is not required under Part 6D.2 or 7.9 of the Corporations Act, and (b) who is otherwise permitted to receive credit ratings in accordance with applicable law in any jurisdiction in which the person may be located. Anyone who is not such a person is not entitled to receive this document or any Information and anyone who receives this document or any Information must not distribute it to any person who is not entitled to receive it.

By accepting this document, you acknowledge and agree that each transaction party is acting, and will at all times act, as an independent contractor on an arm’s-length basis and is not acting, and will not act, in any other capacity, including in a fiduciary capacity, with respect to you.

THE INFORMATION CONTAINED HEREIN SUPERSEDES ANY PREVIOUS SUCH INFORMATION DELIVERED TO ANY PROSPECTIVE INVESTOR AND WILL BE SUPERSEDED BY THE FINAL OFFERING DOCUMENT AND UNDERLYING TRANSACTION DOCUMENTS IN CONNECTION WITH THE OFFERING OF THE NOTES.